



AN INTELLIGENT APPROACH FOR AUTOMATING DATA INPUTS ON WEB PORTALS FOR SEVERAL APEX / STATUTORY BODIES IN THE FIELD EDUCATION USING ROBOTICS AND MACHINE LEARNING

Ms. Kajal Jaisinghani

Asst. Professor, B. K. Birla College (Autonomous) , Kalyan, Maharashtra State, India

Mr. Vinod Rajput

Research Scholar, SAM Global University, Bhopal

Ms. Subhodini Gupta

Research Guide, Sam Global University, Bhopal

Dr Pamarthi Satyanarayana

Assistant Professor, Vel Tech University, school of law, Chennai, Avadi.

Santosh Singh

Assistant Professor, Department of physics Institute of Aeronautical Engineering

ABSTRACT-World is upgrading day by day and education system is going side by side using that technologies. Automatic data inputs is a data entry process which means taking information from different sites and sorting them out in a particular section. This is very important part for any business and automating process helps this work easy as it is quite tough to do all the work for a single person. It is very essential for one student to get knowledge about machine language as it will be helpful for them in the future. Machine learning technology helps to keep all the data up to date and also for cyber security. Children are always finding something which is easy to remember and funny, hence learning new thing using robotic function helps them a lot. After COVID-19, most of the education filed has started online classes and using MI and robotic things, it is easy for them to gaining knowledge that are not able to attend schools.

Keywords: Robots, machine language, data, education, methods, upgrade

I. INTRODUCTION

Nowadays, human are leaving a digital life which is full of technologies and that making life easier and helpful and most essential it saves time. Intelligence approach for automating data upload on web portals helps the work easy; therefore it has a risk factor also. Technologies are upgrading but all the people are not using this for a good purpose and sometimes hackers are using it for their profit [4]. An intelligence approach is a part of machine language and knowing thing language for one is very helpful for their career for future. Gaining knowledge from young age, especially from schools, developing their brains easily. Robotics use in a classroom help students to know about new things and what is necessary for them and collecting data. Education is the most essential part for any human life, and it is the best time for making them responsible and enough educated to get a job easily [11]. Now the world is full of technologies and if someone has no knowledge about machine language then it will be difficult for them to stay upgraded. Robotic education is funny and easier for primary and infant education. Computer can only understand machine language, and it is making with 0 and 1, and it helps the work automatic.

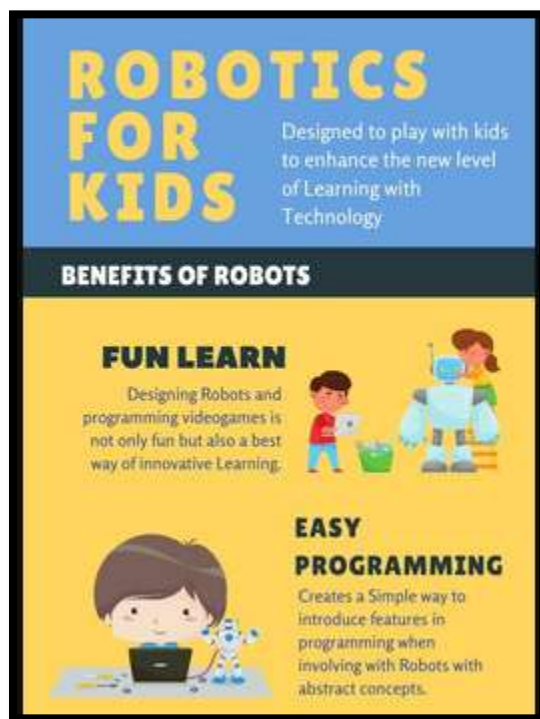


Figure 1: Machine language and robotic use in education

(Source: 15)

Robotic studies help the student skill in different ways, like children became more creative and intelligent. It helps the student to do a team work and learning from each other mistakes [14]. One who gets motivation for learning new things is always considered own thinking, developing the communication process. Machine language is mainly a human creativity, and it is the most impressive technologies which makes work easy. It helps to store data safely in a particular part, and finding it out for future use is easy to find. Machine can learn from past and improving its own mistake easily and for an organization it is necessary to keep it as there are huge data available.

II. OBJECTIVE

- To understand the advantages of intelligent approach for automatic data input
- To describe about advantages and disadvantages about MI
- To use of robotics in education field
- To find out the side effects of robotic education
- To analyze the data entry automation

III. METHODOLOGY

Every research has a particular method or process which helps in improving the result and find out how the study process will go. Methodology means the data collection and describes the methods which are using for research. Here the researcher shows the method which was followed for this study like it was primary source or secondary source [7]. The researcher was chosen secondary research methods which include Google Scholar, journals, blogs, and past articles. In the past someone was researched about this topic, and now it will help the researcher to know about some details of study and after going through of those details, the researcher was found some tips. The data

collection methods are also described here, and it might be quantitative method which is numerical methods and qualitative methods which means the works or the informative information.

IV. INTELLIGENCE APPROACH FOR AUTOMATIC DATA INPUT

Intelligent approach means how the human using their brains for making new technologies. Educational intelligence approach is collecting data from different places and creates a pattern of gathering all data in one place [15]. It will help future studies and improving the way of thinking. Automating capturing data from different sites and collects them in a particular path using a technology helps the work easy and time saving. Education is a big filed, and it is quite difficult for one person to keep all the data in handy, so if they have started using the automatic process then it will easy. It will reduce the human error and paperwork and save a huge amount of cost.



Figure 2: Automatic data inputs process

(Source: 7)

V. ADVANTAGES AND DISADVANTAGES OF MACHINE LANGUAGE

Every work has some advantages as well as disadvantages, and here the researcher has described about that:

Factors	Advantages	Disadvantages
Cost	Improving any system it takes cost, but it is worth it for its outcome.	It is so much costly.
Enhance the experience	It is easy to gain knowledge in study and funny process	Students are totally involving into it, and it affects their health for continually looking into the system
Opportunities	Knowing about MI will help to get the new jobs easily as now most of the companies are developing their technologies.	Using excess amount of technologies, the companies cut out the human working process and as a result, unemployment increasing.
Security	The data have been collected, are storing in a particular place and due to new pieces of software it keeps safe.	New technologies are arriving and for that there are lots of chances of hacking data from system.
Upgrade	MI is basically the result of human thoughts and brains and upgrading it in a daily basis it will be improving the technologies.	MI is a machine, and it is impossible that it will be upgrading automatically, so without human helps it will stop working.

Ability	One who has proper knowledge of machine language is able to do work easily.	This is not possible for all human to get the knowledge of MI and if there is no ability of learning new things then it will be difficult to get jobs.
---------	---	--

Table 1: Advantages and disadvantages of MI

(Source: 5)



Figure 3: Machine language

(Source: 8)

VI. ROBOTS IN EDUCATION

Robots are the result of human intelligence, and it helps the human work easy and save time. It makes the students independent, and they can do their own study by themselves [15]. The primary school students and infants are enjoying this study process, and it helps them to learn new things. After COVID-19, when the educational systems became online that time the only way of educated the students are these robotic systems.



Figure 4: Uses of robot

(Source: 5)

There are different types of games available which help the students to learn new things and brush-up their knowledge. This robotic process helps the students to learn from their mistakes and discovering their errors [5]. It is colorful; create sounds and lights which makes the children happy and giving encouragement.

VII. SIDE EFFECTS OF ROBOTIC EDUCATION

Every work or technologies has side effects, and sometimes it is harmful for brains and health. There are lots of teachers available who have no knowledge about using these machines. It is a risk for education filed as everything will be working automatically and there will be no need of schools [8]. Staring at the system continually may affect their mental health and create an eye site issue. While the students are totally involving into the system, they are started ignoring the book reading, and they are only started of getting information through internet [6].

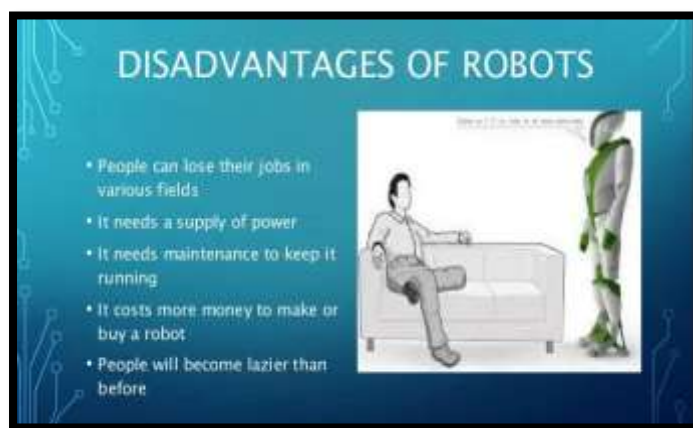


Figure 5: Disadvantages of robot

(Source: 8)

Robotic education is not possible for those students who are staying in urban area and if they are trying to gain knowledge from that it will be costly for them.

VIII. PROBLEM STATEMENT

There are different types of issue can create while doing this study. Researcher has faced few problems and most of the researcher did not want to discuss it with others as it can create an issue in further. Here the main source of collecting data was secondary data, which is already available in internet [15]. Primary source is the best process for collecting data as it is totally original and no copying and pasting. The researcher has used the Google Scholar, journal, and blogs information which was already used by others. Sometimes there are biased decision happening which may create a lot of issue for study.

CONCLUSION

While doing this research, the researcher has found different types of new technologies. Nowadays, technologies are very important for our day-to-day life and someone who is gaining knowledge from childhood it will be easy for them in the future. Technologies are upgrading, and human lifestyle has also changed for that. After Covid, when everyone became dependent that time, technologies helped them to gather knowledge as well as doing their jobs and study to stay at home. Therefore, it is essential for all to know about the technologies and staying up to date with the time.

REFERENCES

- [1] Du, H., Teng, S., Chen, H., Ma, J., Wang, X., Gou, C., ...& Wang, F. Y. (2023). Chat with ChatGPT on Intelligent Vehicles: An IEEE TIV Perspective. *IEEE Transactions on Intelligent Vehicles*. Retrieved from <https://ieeexplore.ieee.org/iel7/7274857/9761372/09761398.pdf> [Retrieved on 28.03.23]

- [2] Cao, D., Wang, X., Li, L., Lv, C., Na, X., Xing, Y., ...& Wang, F. Y. (2022). Future directions of intelligent vehicles: Potentials, possibilities, and perspectives. *IEEE Transactions on Intelligent Vehicles*, 7(1), 7-10. Retrieved from <https://ieeexplore.ieee.org/iel7/7274857/9761372/09761398.pdf> [Retrieved on 28.03.23]
- [3] Gupta, B. B., Gaurav, A., Marín, E. C., & Alhalabi, W. (2022). Novel graph-based machine learning technique to secure smart vehicles in intelligent transportation systems. *IEEE transactions on intelligent transportation systems*. [Retrieved on 28.03.23]
- [4] Adamson, G., & Herkert, J. (2022). Addressing intelligent systems and ethical design in the IEEE Code of Ethics. *Codes of ethics and ethical guidelines: Emerging technologies, changing fields*, 145-159. [Retrieved on 28.03.23]
- [5] Taha, A. A., & Malebary, S. J. (2020). An intelligent approach to credit card fraud detection using an optimized light gradient boosting machine. *IEEE Access*, 8, 25579-25587. Retrieved from <https://ieeexplore.ieee.org/iel7/6287639/8948470/08979331.pdf> [Retrieved on 28.03.23]
- [6] Du, H., Teng, S., Chen, H., Ma, J., Wang, X., Gou, C., ...& Wang, F. Y. (2023). Chat with ChatGPT on Intelligent Vehicles: An IEEE TIV Perspective. *IEEE Transactions on Intelligent Vehicles*. [Retrieved on 28.03.23]
- [7] Cao, B., Zhang, L., Li, Y., Feng, D., & Cao, W. (2019). Intelligent offloading in multi-access edge computing: A state-of-the-art review and framework. *IEEE Communications Magazine*, 57(3), 56-62. [Retrieved on 28.03.23]
- [8] Cao, D., Wang, X., Li, L., Lv, C., Na, X., Xing, Y., ...& Wang, F. Y. (2022). Future directions of intelligent vehicles: Potentials, possibilities, and perspectives. *IEEE Transactions on Intelligent Vehicles*, 7(1), 7-10. Retrieved from <https://ieeexplore.ieee.org/iel7/7274857/9761372/09761398.pdf> [Retrieved on 28.03.23]
- [9] Elbir, A. M., Papazafeiropoulos, A., Kourtessis, P., & Chatzinotas, S. (2020). Deep channel learning for large intelligent surfaces aided mm-wave massive MIMO systems. *IEEE Wireless Communications Letters*, 9(9), 1447-1451. [Retrieved on 28.03.23]
- [10] Yang, N., Yang, C., Wu, L., Shen, X., Jia, J., Li, Z., ...& Liu, S. (2021). Intelligent data-driven decision-making method for dynamic multisequence: An E-seq2seq-based SCUC expert system. *IEEE Transactions on Industrial Informatics*, 18(5), 3126-3137. [Retrieved on 28.03.23]
- [11] Xiong, B., Zeng, N., Li, H., Yang, Y., Li, Y., Huang, M., ...& Zhang, Y. (2019). Intelligent prediction of human lower extremity joint moment: an artificial neural network approach. *IEEE Access*, 7, 29973-29980. Retrieved from <https://ieeexplore.ieee.org/iel7/6287639/6514899/08648489.pdf> [Retrieved on 28.03.23]
- [12] Mumtaz, S., Ashraf, M. I., Menon, V. G., Abbas, T., & Al-Dulaimi, A. (2023). Guest Editorial Intelligent Autonomous Transportation System With 6G—Series—Part III. *IEEE Transactions on Intelligent Transportation Systems*, 24(2), 2035-2037. Retrieved from <https://ieeexplore.ieee.org/iel7/6979/10040978/10040940.pdf> [Retrieved on 28.03.23]
- [13] Arisdakessian, S., Wahab, O. A., Mourad, A., Otrok, H., & Kara, N. (2020). FoGMatch: an intelligent multi-criteria IoT-Fog scheduling approach using game theory. *IEEE/ACM Transactions on Networking*, 28(4), 1779-1789. [Retrieved on 28.03.23]
- [14] Alsenwi, M., Tran, N. H., Bennis, M., Pandey, S. R., Bairagi, A. K., & Hong, C. S. (2021). Intelligent resource slicing for eMBB and URLLC coexistence in 5G and beyond: A deep reinforcement learning based approach. *IEEE Transactions on Wireless Communications*, 20(7), 4585-4600. [Retrieved on 28.03.23]
- [15] Ying, K., Gao, Z., Lyu, S., Wu, Y., Wang, H., & Alouini, M. S. (2020). GMD-based hybrid beamforming for large reconfigurable intelligent surface assisted millimeter-wave massive MIMO. *IEEE Access*, 8, 19530-19539. Retrieved from <https://ieeexplore.ieee.org/iel7/6287639/8948470/08964330.pdf> [Retrieved on 28.03.23]